

Bethany Beacon

JANUARY 2023

Bethany Lutheran Church Annual Meeting: January 22

Our congregation's annual meeting will be held on Sunday, January 22. Please plan to attend this meeting at 12:30 p.m. in the Family Life Center. The church leadership will review the accomplishments of 2022 and plans for 2023. A second vote will take place to accept the changes to the Constitution and By-Laws of the congregation.



Bethany members:
Please plan to attend this
congregational meeting!

Giving Envelopes

The 2023 giving envelopes will be available to pick up on Sunday, January 1. Please pick up your family's envelopes. If you do not find your box, please contact the church office at office.bethanycr@gmail.com. Giving statements will be sent out at the end of January.



Bethany
Lutheran Church

Living and Sharing God's Love

For my thoughts are not your thoughts, neither are your ways my ways, declares the Lord.
Isaiah 55:8

As is our yearly tradition, after the Advent and Christmas celebrations at Bethany in Iowa, my family loads up the car and heads to Michigan to continue the festivities and spend time with our extended family there. Now some of you may know that my side of the family lives in south-east Michigan, with a climate that is quite similar to Cedar Rapids. So, traveling there in the winter is similar to driving down I-380. There can be the occasional snow and ice, but for the most part the roads are clear and the weather isn't bad. But my wife's family lives in northern Michigan, in the "tip" of the Lower Peninsula, where traveling in the wintertime is a whole different story.

Many of the roads that we must travel on these trips are along the coast of Lake Michigan, where the lake effect snow is almost a constant. And, "Up North" as Michiganders like to call this area, there aren't any highways to get to where we need to go. So, I wasn't surprised that as we drove to see my wife's parents this year, we ran into blowing snow, white out conditions, and icy two-lane roads. This seems to be as much of an annual tradition as singing "*Silent Night*" on Christmas Eve.

And driving along in these conditions this year, I noticed an interesting phenomenon. As I had to slow down to what I considered to be a safe speed, given the conditions, I perceived anyone driving faster than me to be a crazy dare-devil with a death wish! But anyone who was driving slower than me, seemed to not know that "the gas pedal is the one on the right" or how to drive in snowy conditions. As I muttered under my breath about those who were going too fast or too slow, I took great comfort in knowing I was going along at exactly the right speed. Anyone going even one mile per hour slower or faster than I, simply didn't know what they were doing!

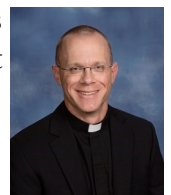
Of course, as I thought about this, I realized how ridiculous it is to think this way. Those who were going faster than I may have had better tires, more experience on those roads, or maybe an emergency to get to. And those going slower, may-

be their car wasn't as good in the snow or maybe I was going too fast for the given conditions. Regardless, I realized it was foolish to think that the speed I was going was the only speed that everyone should be traveling. Doing so, I was in essence trying to make myself out to be a little god.

As Bethany enters into the new year, our church family stands at interesting place as we look both forward to the future, but also back into the past. At our January Voters' Meeting, the Annual Report will be presented. Here, we'll see exactly how the Lord has blessed our congregation this past year with the hard work, dedication, and faithful stewardship of so many. But in January, we'll also hear of the new vision that is being created for Bethany's future. This is the result of the Congregational Assessment Tool, focus groups, and conversations that have taken place in 2022 to help us plan for the future. Like many, the start of the new year will be a time for our congregation to look forward and back to the past.

And as we do so, I can't help but to wonder if we have been going "too slowly or too fast" in the past? Looking to the future, should we "speed up or slow down"? As we ask such questions, we must realize that the right direction for me, may not be the right direction for anyone else, and vice versa. We must realize that we alone can't be right all of the time or that everyone who disagrees with me must be a blasphemous heretic! If we think like this, we are trying to make ourselves to be little gods in the church.

So, as we look back on 2022 and travel forward into the new year, let's not worry so much about what you or I think, let us worry about what God thinks! Give thanks for what He has done in the past. Repent where we have strayed from His ways. And let us faithfully discern His will for us in the future. Because His way is always the right way and the only way that matters. Amen.



✠ Pastor Erickson

Thanksgiving:

Keziah (infant daughter of *Darin & *Maren Elm)- born 12/2
DCE intern, Kierra will be serving at Bethany during 2023
Dan (father of *Michelle Wiersig) - recovered after surgery
Alyse (granddaughter of *Janelle Dunbar)- recovered
Rowan (granddaughter of *Thomas')- recovering

Illness, injuries, health issues:

Lorena (sister of *Brenda Heims)- recovering after surgery
Marcia (relative of *Brenda Heims)- health issues
Jean (mother of *Kristi Montague)- recovering after stroke
Raymond (father of Lora Raymon) - health issues
Nora (great granddaughter of Pat Krekeler) - In NICU
Trevor (son of *Thomas')- recovering after hospitalization
Sylvia (aunt of *Patricia Hinrichs) - health issues
Rhonda (friend of *Larsons) - health issues
Teri (relative of *Schoens)- health issues
Dave (relative of *Jennet Volden)- bike accident
Judy (relative of *Brenda Heims)- health issues
Tom Mark (former member)- recovering after accident
Andrew (relative of *B Heims)- recovering after surgery
Hayden (relative of *Bonnie Bubke)- brain disorder
Gwendolyn- (friend of *Karen Swanson)- terminal illness
John (nephew of *Bonnie Bubke)- health issues
Ruth (friend of *Velma Ziesemer)- health issues
Rod (nephew of *Bonnie Bubke)- Parkinson's Disease

Safety:

Ben - serving in the Iowa National Guard
Mitchell & Benjamin (relatives of *Schoens & *Smith)- U.S. Navy
Harrison (son of *Siecks)- U.S. Army, deployed to Poland

Local/National/World:

Local, state, and national leaders
Victims of floods, hurricanes, fires and disasters

Grief, family and friends of:

*Norm Rutz- died 12/26
John (brother of *Donice McDonald)- died 12/26
Winona- (sister of *Bonnie Breiholz)- died 12/24
*Joyce Fritz- died 12/15
Carol (mother of *Kris Larson)- died 12/15

Homebound members of Bethany:

*Wayne Schilling- Linn Manor Care Center, Marion
Candi Engel- Garnett Place
*Nadine Wax- at home
*Del Block- The Gardens
*Tom Stock- at home
*Larry & *Sharon Easler- Summit Pointe, Marion
*Darlene Eckert- at home
*Melba Davison- Terrace Glen Village, Marion
*Shirley Kellogg- at home
*Dorothy Freese- Keystone Place

Cancer/Hospice:

Chuck (father of *Jim Novitch) - cancer
Courtney (Monday am coffee friend)- cancer treatment
Sam (friend of *Carol Grimminger)- cancer treatment
Francis (friend of *Larsons) - cancer treatment
Maureen (aunt of *Janet Hoech)- hospice care
Patrick (friend of *Mary Vezina)- cancer treatment
John (friend of *Dunns)- chemo treatment
Ron (brother of *Ray McGraw)- cancer treatment
Shauna (niece of *Schmiths)- cancer
Jerry (brother of *Ronda Anderson)- cancer treatment
Rose (friend of *Kay Karsten)- cancer treatments
Karen (mother of Bethany friend)- cancer treatment
Karen (relative of *Carol Grimminger)- hospice care
Tony (friend of *Mike Thomas)- cancer
David (relative of *Hasses)- cancer immunotherapy
Julie (friend of *Brenda Heims)- cancer
Chad (son of *Vicki Huschka)- leukemia



Prayer Chain

Are you a prayer warrior? If you would like to receive periodic prayer requests from the congregation via email, contact the church office at:
office.bethanycr@gmail.com to be added to the prayer chain email list.

Bethany Prayers

Do you have prayer requests? Let us know if you would like your request added to the prayer list, the email prayer chain, or both. Call 364-6026 or email requests to nurse.bethanycr@gmail.com.

JANUARY CALENDAR

Sunday, January 1

1:00 pm Food Pantry Open

Monday, January 2

Office Closed

6:00 pm Trustees Meeting

Tuesday, January 3

6:00 pm Evangelism Meeting

6:30 pm Handbells Rehearsal

Wednesday, January 4

6:00 am Men's Bible Study

6:00 pm Confirmation Class

6:00 pm High School Youth

6:30 pm Vocal Choir

Thursday, January 5

9:00 am Adult Bible Study

6:00 pm Human Care Meeting

6:00 pm Stewardship Meeting

Saturday, January 7

9:00 am Holy Yoga

Sunday, January 8

Induction of Kierra Penney during both services

12:15 pm Board of Ed Meeting

1:00 pm Food Pantry Open

4:00 pm Pickleball in FLC

Monday, January 9

1:30 pm LWML Board Meeting

6:00 pm Stephen Ministry Supervision

7:00 pm Elders' Meeting

Tuesday, January 10

9:00 am Quilting

6:30 pm Handbells Rehearsal

7:00 pm Church Council Meeting

Wednesday, January 11

6:00 am Men's Bible Study

5:30 pm Family Meal

6:00 pm Family Faith Night

6:30 pm Vocal Choir

Thursday, January 12

9:00 am Adult Bible Study

1:30 pm Leah Circle

6:30 pm Naomi Circle

Friday, January 13

9:30 am Rebekah Circle

Saturday, January 14

9:00 am Holy Yoga

Sunday, January 15

Baby Bottle Boomerang Pickup

1:00 pm Food Pantry Open

4:00 pm Pickleball in FLC

Tuesday, January 17

6:30 pm Handbells Rehearsal

Wednesday, January 18

6:00 am Men's Bible Study

4:00 pm Cottage Grove Devotion

6:00 pm High School Youth

6:00 pm Confirmation Class

6:30 pm Vocal Choir

Thursday, January 19

9:00 am Adult Bible Study

11:00 am Senior Worship

Saturday, January 21

9:00 am Holy Yoga

Sunday, January 22

9:30 am Blood Pressure Check

12:30 pm Voters Meeting

1:00 pm Food Pantry Open

4:00 pm Pickleball in FLC

Monday, January 23

6:30 am Coffee Outreach

6:00 pm Stephen Ministry Continuing Ed

Tuesday, January 24

6:30 pm Handbells Rehearsal

Wednesday, January 25

6:00 am Men's Bible Study

6:00 pm High School Youth

6:00 pm Confirmation Class

6:30 pm Vocal Choir

Thursday, January 26

9:00 am Adult Bible Study

Saturday, January 28

9:00 am Holy Yoga

Sunday, January 29

Baby Bottle Boomerang Return

1:00 pm Food Pantry Open

Monday, January 30

6:30 am Coffee Outreach

Tuesday, January 31

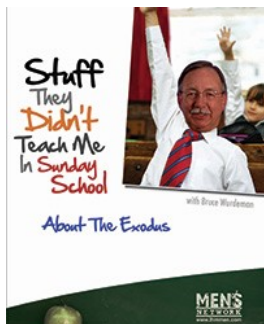
6:30 pm Handbells Rehearsal

JANUARY BIRTHDAYS

1/1	Julie Gutman	1/16	Shirley Hoppe	1/26	Candi Engel
1/4	Janelle Dunbar		Stephanie Macke		Tina Freese
	Darren Scott		Duane Pfeffer	1/27	Amy Smith
1/5	Nate Smith	1/17	Kelly Johnson	1/28	Elianna Novitch
1/8	Hudson Freese		Diana Long	1/29	Laurie Jasper
1/9	Phil Hoppe	1/18	Tami Vande Weerd	1/30	Laura Holt
	Archer Milbach	1/19	Pastor Erickson		Lynn Kellogg
1/10	Sebastian Foreman		Caleb Strait		
	Jeffrey Jasper	1/20	Jake Vande Weerd		
	Lissa Novitch	1/21	Sarah Kaufman		
1/11	Kellen Volden	1/22	Tyler Hedtke		
	Everly Zimmerman		Kris Larson		
1/13	Mary Nanke	1/23	Stephanie Chittick		
	Tom Stock		Elizabeth Corey		
1/15	Kathryn Deetz		Tyler Gates		

JANUARY ANNIVERSARIES

1/3	Pete & Kris Larson	1/5	Mark & Kim Neuhaus
1/4	Ken & Elaine Cook	1/6	Pat & Mindy Thies

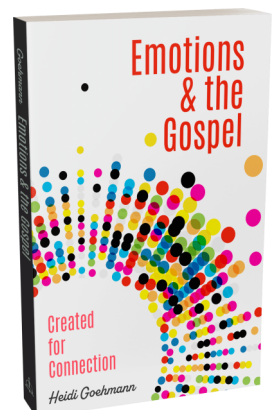


Men's Bible Study

Bethany men meet via Zoom on Wednesdays at 6:00 a.m. On January 4, they will resume their “Stuff They Didn’t Teach Me in Sunday School” study on the book of Exodus. All men are welcome and encouraged to participate in this group for study and fellowship! The group also meets occasionally for breakfast. If you would like the link to the Zoom meeting, please contact the church office at office.bethanycr@gmail.com.

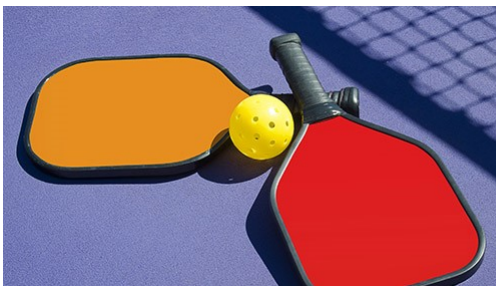
Women's Bible Study

Women's Bible Study is currently on break. The group will start a new study entitled, *Emotions & the Gospel*, and resume on Monday, February 13. The Monday group will meet in the Bethany Family Life Center at 10:00 a.m. All women are welcome and encouraged to participate in this group for study and fellowship! If you would like to learn more about women's Bible study, contact Ronda at nurse.bethanycr@gmail.com. Books are \$13. Let Nurse Ronda know if you plan to join the group or would like a book by January 15.



Sewing Quilts for World Relief

On Tuesday, January 10, the Special Projects Committee will be tying quilts for Lutheran World Relief in the Family Life Center. We will start at 9:00 a.m. and end around noon. Stop in for an hour or stay the whole time. We appreciate any time that you can give. If you plan to stay through the noon hour, bring a sack lunch. If you have any questions, contact Betty Happel at blhappel@imonmail.com or Donna Bogner.



Learn Pickleball with Ben Mims

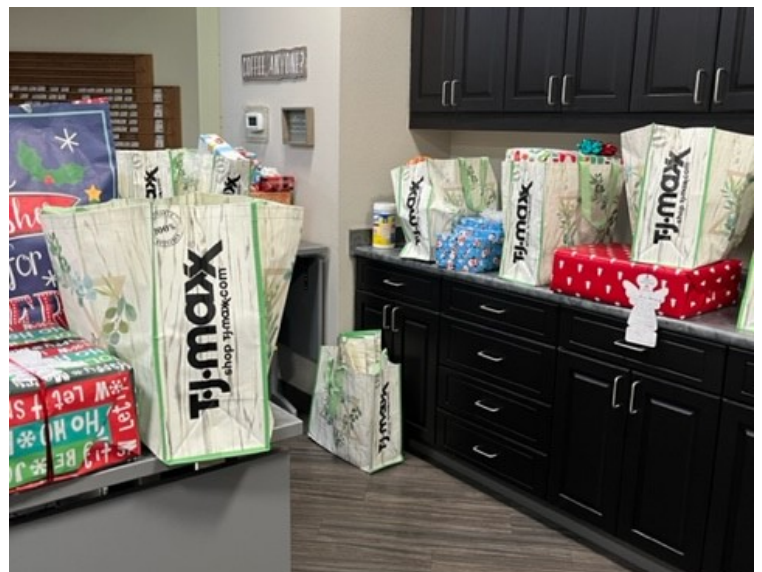
Ben Mims is bringing his love of Pickleball to Bethany! If you've never played then this is the time to join Ben at Bethany on most Sundays at 4pm and learn how to play pickleball. Ben has all the gear, you just need to show up.

Pickleball is a social sport that encourages changing partners every game. It is a mix between tennis and ping pong but that really doesn't do justice to explain the game.

Angel Tree



“Thank you Bethany Lutheran congregation for supporting the **Angel Tree Ministry** once again this year. We served 15 families and 34 children!! The families are always so grateful. Also, a big thank you to the Bethany Lutheran Sunday Youth and Becky Thur for collecting toiletries for the families this year. Each family got a re-useable tote filled with toilet tissue, Kleenex, tooth paste and tooth brushes. The families really loved these bags!!





Baby Bottle Boomerang for Bridgehaven

How can you show your support for life? By filling a bottle, you are recognizing the beautiful lives that have been touched and saved through the ministry of Bridgehaven. Money raised in a baby bottle campaign supports the life-changing work of meeting the physical and spiritual needs of men and women who find themselves facing an unplanned pregnancy.

You are helping to reach thousands of students through our education programs; making abortion recovery counseling available to all; providing pregnancy testing and ultrasounds to our clients; and making it possible for mothers, fathers, and children to get material support and education through Bridgehaven's "Earn While You Learn" program.

**1**

Pick up a bottle from Bethany on January 15.

2

Use the bottle as a reminder to pray for Bridgehaven.

3

Return the filled bottle to Bethany by January 29.



Children's Program 2022



Growing in Faith Sunday School

This year's Sunday School theme is "Growing in Faith"! Sunday School is held on Sundays at 9:45-10:45 a.m. for students in preschool through high school. Please join us each Sunday in the lower level. If it is your child's first time attending Sunday School, please accompany them downstairs and bring them to the Sunday School office, and someone will be happy to show you to their classroom! Not sure where to go while your child is in Sunday School? All parents are invited to Pastor Erickson's Bible study for adults in the Family Life Center.

Family Faith Night: Wednesday, January 11

Family Faith Night is a ministry for students in preschool through high school and their parents to attend on the second Wednesday of each month! Our next Family Faith Night will be on Wednesday, January 11. A meal is served at 5:30 p.m. and the program is held 6:00-7:30 p.m. If you plan to attend Family Faith Night, RSVP at www.bethanycr.org/children-youth.



January Evangelism Challenge

There are ways we can all live and share God's love with those around us. Last month your evangelism challenge was to support the Food Pantry.

In January, your evangelism challenge is to Try Something New. The challenge can be applied to Bethany or also outside of Bethany. Try volunteering in a food pantry and serving coffee on a Monday to the students and others who pass by Bethany. You could also try cross country skiing or joining a book club outside of Bethany. Please share what you decide to try with a member of our evangelism board (Lissa Novitch) and we will report on that in a future Beacon.

Senior Worship

Thursday, January 19, 2023

Senior Worship Service at 11:00 a.m.

Fellowship Luncheon to follow

If you plan to attend, please call the church at 319-364-6026.



Joy's Journal

Happy New Year everyPAWdy! Do you have any resolutions or goals for 2023? Mine are to continue showing love and comfort to those around me! I get lots of opportunities each month to do so: I visit my FURiends at Trinity Lutheran School each Thursday morning, visit three senior homes each month, and make special visits when requested. I've also been known to show up at a birthday party or special Bethany event. I hope to see all of you in services on January 29th -- the fifth Sunday of the month, I'll be at the front door greeting!

 Joy

Joy wishing you a Happy New Year!

Cottage Grove Devotional with Pastor Francik and Rynne Molinari

Bethany hosts monthly devotionals at Cottage Grove Place on the 3rd Wednesday at 4pm.



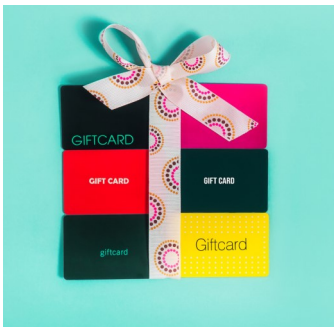
January Voters' Meeting - 22nd at 12:30pm

The November Voters' Meeting passed the 2023 budget and had the first vote to accept changes made to the Constitution and By-Laws of the congregation. (As required, we will be having a second vote on the constitutional changes at our meeting in January.) The meeting will also include summaries of what Bethany boards and committees have been up to this past year.

All voting members (members aged 18+) are asked to attend.

Office Staff Updates

- Office and Communications Coordinator Maren Elm will be on maternity leave December through February. When she returns to Bethany, she will work part-time (two days per week) and will continue the communications portion of her position (publishing bulletins and Beacons, managing Bethany's website and social media pages, creating announcement slides, and emailing out news updates). While Maren is on maternity leave, Mark Holt will cover her position in the office. **Mark can be contacted at office.bethanycr@gmail.com.**
- Bethany welcomes Wendi Wallander as Office Manager! She will work on Mondays, Tuesdays, and Wednesdays. **Wendi can be contacted at officemanager.bethanycr@gmail.com.** Let's share a warm Bethany welcome: take the time to send an email or stop by the office to introduce yourself!
- DCE Intern Kierra Penney will arrive in January. She is a student at Concordia University Nebraska and will spend one year learning and serving at Bethany to complete her studies in the Director of Christian Education program. **Kierra's induction will be during services on Sunday, January 8.**



Let's Welcome Kierra Penney, DCE Intern

A reception and card shower is planned for Kierra on her first Sunday at Bethany on January 8 at a cake reception in the gathering area between services. Members are also encouraged to drop off a gift card or card of encouragement to give Kierra a great welcome.



Monday Morning Outreach

On Mondays during the school year we set up a tent out front to serve free coffee and cocoa to Washington High School students and any neighbors who stop by. This outreach is very well received by the community! We hand out about 80 cups each week. Each Monday we need volunteers at 6:30-8:00 a.m. to help serve warm drinks and smiles. If you would like to serve in this unique ministry, sign up for a Monday at www.bethanycr.org/serve.





Bethany Lutheran FOOD PANTRY

The Bethany food pantry was established June 13, 2021

Our food bank and partner is HACAP (Hawkeye Area Community Action Program). We are one of 172 partners in the 7-county service area and one of the 89 Linn County partners.

Our food pantry is open on Sundays 1-3pm

We've averaged 83 neighbors each week in the past 4 months. These neighbors then take the food to an average of 393 people in those households! Since we've started (80 weeks later) we have had 3,743 (many duplicated) neighbors visit the food pantry! Most weeks we have 10-15 new neighbors come to the pantry. The neighbors are asked to take only what they need for the week and to respect the limits that are posted on some items/foods. We offer personal care items, canned and dry goods, frozen and refrigerated food.

It takes a platoon of people to pick up, transport, unload, and stock the shelves to be ready for those neighbors each week. This is usually done on Friday mornings. The food picked up each week is anywhere from 450 to 1700 pounds! The HACAP food cost per pound averages only \$.06!

We need six volunteers to help each Sunday afternoon from 12:30 to 3:00 to serve the neighbors that come each week. Sign up is done through SignUpGenius on our website. (bethanycr.org/food-pantry) The volunteers assist neighbors in shopping and taking groceries to their cars, restocking the shelves and developing relationships with our neighbors. These interactions have led to some spiritual conversations with those that come to the food pantry.

Twice a month we have volunteers that drive to Kalona to pick up 135 dozen eggs! The Farmers' Hen House donates these much appreciated organic eggs! Pete Larson makes frequent trips during the week to HACAP in Hiawatha to pick up free food that is available only by appointment. By doing this we have a wide selection of fresh and frozen food.

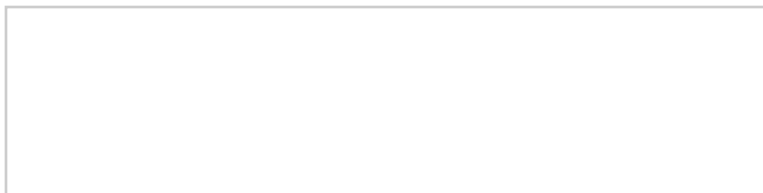
Many members help by donating funds to the food pantry, personal care items, Christian children's books, bibles, candy canes, new Thrivent t-shirts, knit hats and scarves, just to name a few of the wonderful donations! Personal care items such as dish soap, tissues, toilet paper, paper towels, 13 gallon trash bags, laundry pods, bar soap, and shampoo are always in demand.

If you haven't visited the pantry yet, Nurse Ronda or Pastor Erickson would love to show it to you. Thanks for your support!

BETHANY LUTHERAN CHURCH
2202 FOREST DR SE
CEDAR RAPIDS IA 52403-1654

NON-PROFIT ORGANIZATION
U. S. POSTAGE PAID
Permit #118
CEDAR RAPIDS IA, 52403

CHANGE SERVICE REQUESTED




Living and Sharing God's Love

WORSHIP WITH US

Sunday Mornings

8:30 am	Traditional Service
9:45 am	Education Hour
11:00 am	Contemporary Service

CONNECT WITH US

Website	www.bethanycr.org
Email	office.bethanycr@gmail.com
Phone	319-364-6026
	facebook.com/bethanycria